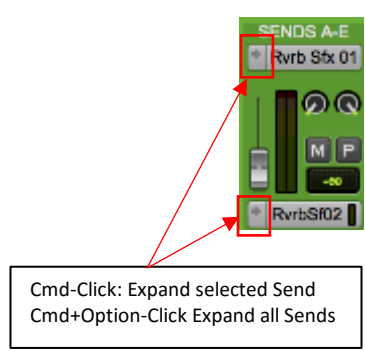


Shift-Click: Open Multiple Plugins / Faders  
 Cmd-Click: Bypass Insert / Mute Send  
 Cmd+Option-Click: Bypass/Mute Insert/Send on all Tracks on selected Slot  
 Cmd+Option+Shift-Click: Bypass/Mute Insert/Send on all Tracks on selected Slot on all selected Tracks

Cmd+Control-Click: Deactivate Insert/Send  
 Cmd+Control+Option-Click: Deactivate Insert/Send on all Tracks on selected Slot  
 Cmd+Control+Option+Shift-Click: Deactivate Insert/Send on all Tracks on selected Slot on all selected Tracks

Control-Click: Bypass/Mute insert/Send and all inserts below it  
 Control+Option-Click: Bypass/Mute insert/Send on all Tracks and all inserts below it  
 Control+Option+Shift-Click: Bypass/Mute insert/Send on all Tracks and all inserts below it on all selected Tracks



Cmd-Click: Expand selected Send  
 Cmd+Option-Click Expand all Sends

Click: input-Monitor enable

Click: Mute  
 Option-Click: Mute all Tracks  
 Option+Shift-Click: Mute all selected Tracks

Click: Record enable  
 Cmd-Click: Record Safe

Click: Solo (Change Solo Mode in Options Menu)  
 Option-Click: Solo all Tracks  
 Option+Shift-Click: Solo all selected Tracks

Cmd-Click: Solo Safe  
 Cmd+Option-Click: Solo Safe all Tracks  
 Cmd+Option+Shift-Click: Solo Safe all selected Tracks

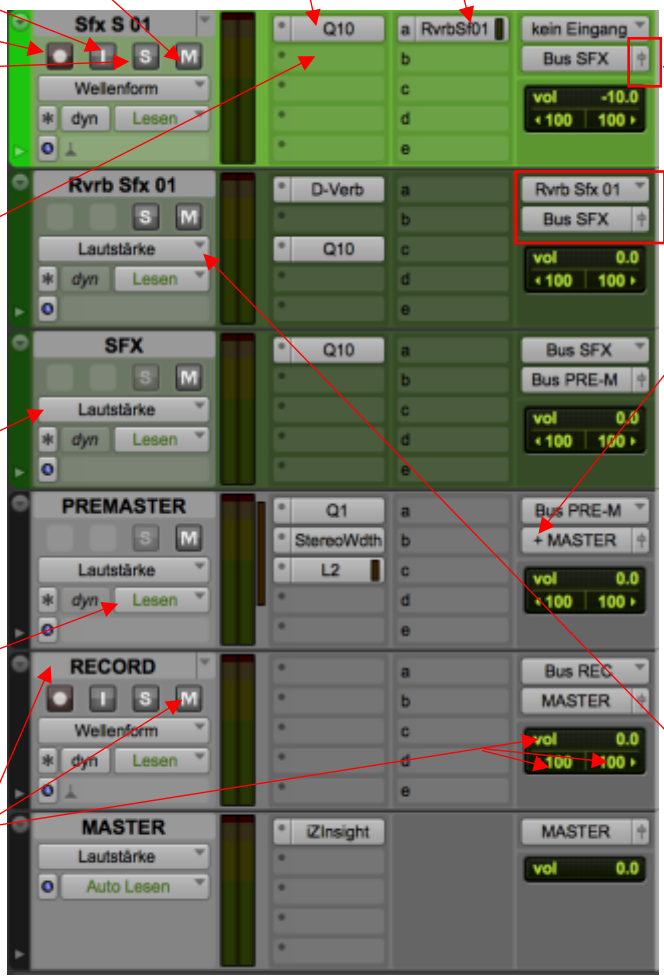
Click: Add new Insert  
 Option-Click: Add new insert for all Tracks on selected Slot  
 Option+Shift-Click: Add new insert for all selected Tracks on selected Slot

Click and Choose: Select Automation  
 Option-Click and Choose: Select Automation for all Tracks  
 Option+Shift-Click nad Choose: Select Automation for all selected Tracks

Cmd-Click: Disable Selected Automation  
 Cmd+Shift-Click; Disable all Automation on selected Track  
 Cmd+Option-Click: Disable Selected Automation on all Tracks  
 Cmd+Option+Shift: Disable all Automation on all Tracks

Click: Set Automation Mode for Selected Track  
 Option-Click: Set Automation Mode for all Tracks  
 Option+Shift-Click: Set Automation Mode for all selected Tracks

Cmd+Control Click: Change Track View to Vol/Waveform, Mute, Pan L/R  
 Cmd+Control+Option Click: Change Track View to Vol/Waveform, Mute, Pan L/R for all Tracks  
 Cmd+Control+Option+Shift-Click: Change Track View to Vol/Waveform, Mute, Pan L/R for all selected Tracks



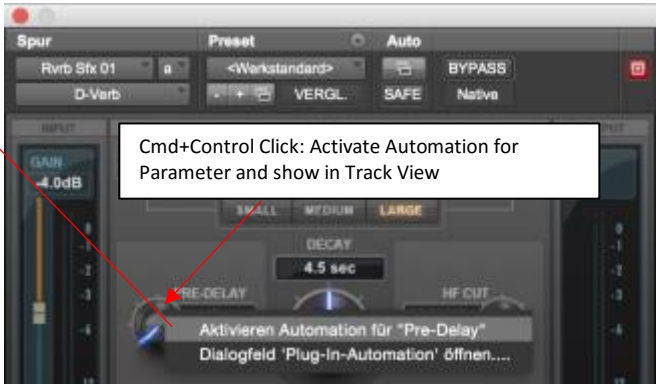
Click: Open Volume-Fader  
 Shift-Click: Open Multiple Volume Faders

Click and Choose: Select I/O  
 Option+Click and Choose: Select I/O for all Tracks  
 Option+Shift-Click and Choose: Select I/O for all selected Tracks

Control-Click and Choose: Add Additional Output (here: Bus REC+MASTER)  
 Control+Option-Click and Choose: Add Additional Output for all Tracks  
 Control+Option+Shift-Click and Choose: Add Additional Output for all selected Tracks

Cmd+Control-Click: Deactivate I/O  
 Cmd+Control+Option-Click: Deactivate I/O for all Tracks  
 Cmd+Control+Option+Shift: Deactivate I/O for all selected Tracks

Cmd+Option-Click and Choose: Number I/O consecutively for all tracks (Start with Selected)  
 Cmd+Option+Shift and Choose : Number I/O consecutively for selected tracks



Cmd+Control Click: Activate Automation for Parameter and show in Track View

**Zoom Tool :**

Normal Zoom: Tool stays selected after zoom  
 Single Zoom: Switches back to previous selected Tool after Zooming

Click: Zoom In  
 Option-Click: Zoom Out  
 Drag: Zoom Selected Area  
 Control-Drag: Zoom Horizontally In and Out

**Smart Tool:**

Trim + Select + Grab - dependent on upper and lower clip half

**Pencil Tool:**

Click-Drag: Draw Audio Waveforms (Destructive), Midi Data, Automation

**Scrubber Tool:**

Click-Drag: Scrub at normal playback speed or lower

Option-Click-Drag: Scrub several times normal speed

**Trim Tool :**

- TCE: Drag: Time Compression / Expansion (Used Plugin: Setup->Preferences->Processing)

Scrub Trim Tool: Drag: Trim while hearing audio information

Loop Trim Tool: Drag: Create and Trim looped clips

**Selector Tool:**

Click/Drag: Position Playback Cursor / Set Edit Selection

Shift-Click: make Selection by Clicking

**Grab Tool:**

Time Grab: Click-Drag: Select Whole Clip

Separation-Grab: Click-Drag: Cuts and Pastes an edit selection from one location to another by dragging

Object-Grab: Click-Drag: Select multiple Clips

**Other Mouse Modifiers**

Set Record-Mode	Right or Control-Click Transport Record Button
Enable/Disable/Set Pre- and Post-roll	Option-Click before/after Edit Selection to set+enable Option-Click inside Edit Selection to disable
Save Current Zoom to Preset 1-5	Cmd-Click Preset Button 1-5
Reverse Trimmer-Tool Direction when trimming clip	Option-Hold while Trimming
Move Clip(s) vertically	Click and Control-Drag
Snap Clip Start to Edit Cursor or Selection Start	Set Cursor to desired position and Control-Click Clip
Snap Clip Sync-Point to Edit Cursor or Selection Start	Set Cursor to desired position and Control-Shift-Click Clip
Snap Clip End to Edit Cursor or Selection Start	Set Cursor to desired position and Control-Cmd-Click Clip
Import to Timeline and create a new Track	Shift+Drag and Drop from Workspace/Cliplist
Import to Timeline, snap clip start (end) to playback cursor	Control(+Cmd)+Drag and drop from Workspace/Cliplist
Import to Timeline, replace existing Clip (HD only)	Cmd+Shift-Drag from Cliplist
Import to Timeline, fit to Edit Selection (HD only)	Cmd+Option-Drag from Cliplist
Audition Clip in Cliplist	Option-Click and Hold on Clip
Temporarily isolate channel strip from Groups	Control-Click (or Right Click) applicable Group Parameter
Edit a Memory Location	Control-Click on Memory Location Marker
Delete a Memory Location	Option-Click on Memory Location Marker
Trim out region precisely to a preceding one	Control-Hold while Trimming with Trim-Tool (also TC/E-Mode - Stretch out region instead of trim)
Additional Clip Functions	Cmd-Right-Click on Clip in Timeline

**Record Modes:**

**Normal (Non-Destructive):** Recording over a track's existing regions, does not erase the audio from the hard drive

**Destructive:** Recording Over existing regions replacing the audio permanently

**Loop (Non-Destructive):** Recording take after take while looping Time Selection

**Quick-Punch (Non-Destructive):** Allows to punch in and out on record enabled audio tracks during playback

**Track Punch (Non-Destructive):** Lets individual tracks be punched in, punched out and taken out of record enable without interrupting online recording and playback

**Destructive Punch:** Let's instantaneously punch in and out on individual audio tracks during playback, while preserving a contiguous audio file on each punched track